

P3331.5.1

**Leaside Business Centre, 43-44 Gillender Street, London, E14 6RP**

Phase 1 Geoenvironmental Desk Study

© agb Environmental 2019

[www.agbenvironmental.co.uk](http://www.agbenvironmental.co.uk)



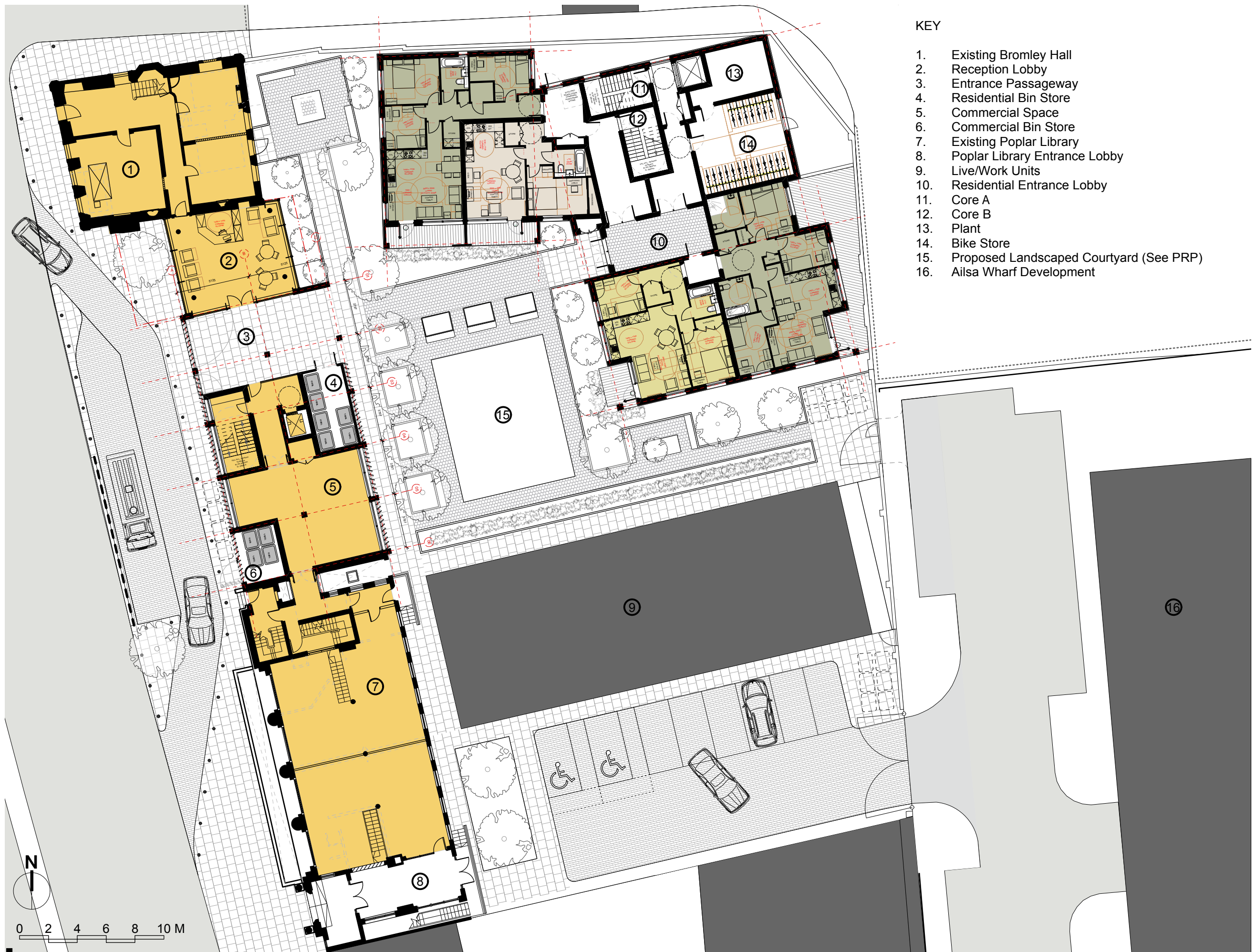
**Part 2 of 7**

# Appendix 1      Plans

---



SITE PLAN



# KEY

- Existing Bromley Hall
- Reception Lobby
- Entrance Passageway
- Residential Bin Store
- Commercial Space
- Commercial Bin Store
- Existing Poplar Library
- Poplar Library Entrance Lobby
- Live/Work Units
- Residential Entrance Lobby
- Core A
- Core B
- Plant
- Bike Store
- Proposed Landscaped Courtyard (See PRP)
- Ailsa Wharf Development



KEY

1. Existing Bromley Hall
2. Toilet converted to Hallway
3. Proposed Bridge into Bromley Hall
4. Double Height Space
5. Proposed Commercial Space
6. Old Poplar Library Commercial Space
7. Live/Work Units
8. Core A
9. Core B

# KEY

1. Bromley Hall
2. Green Roof
3. Proposed Commercial Space
4. Old Poplar Library Commercial Space
5. Live/Work Units
6. Core A
7. Potential Storage Room

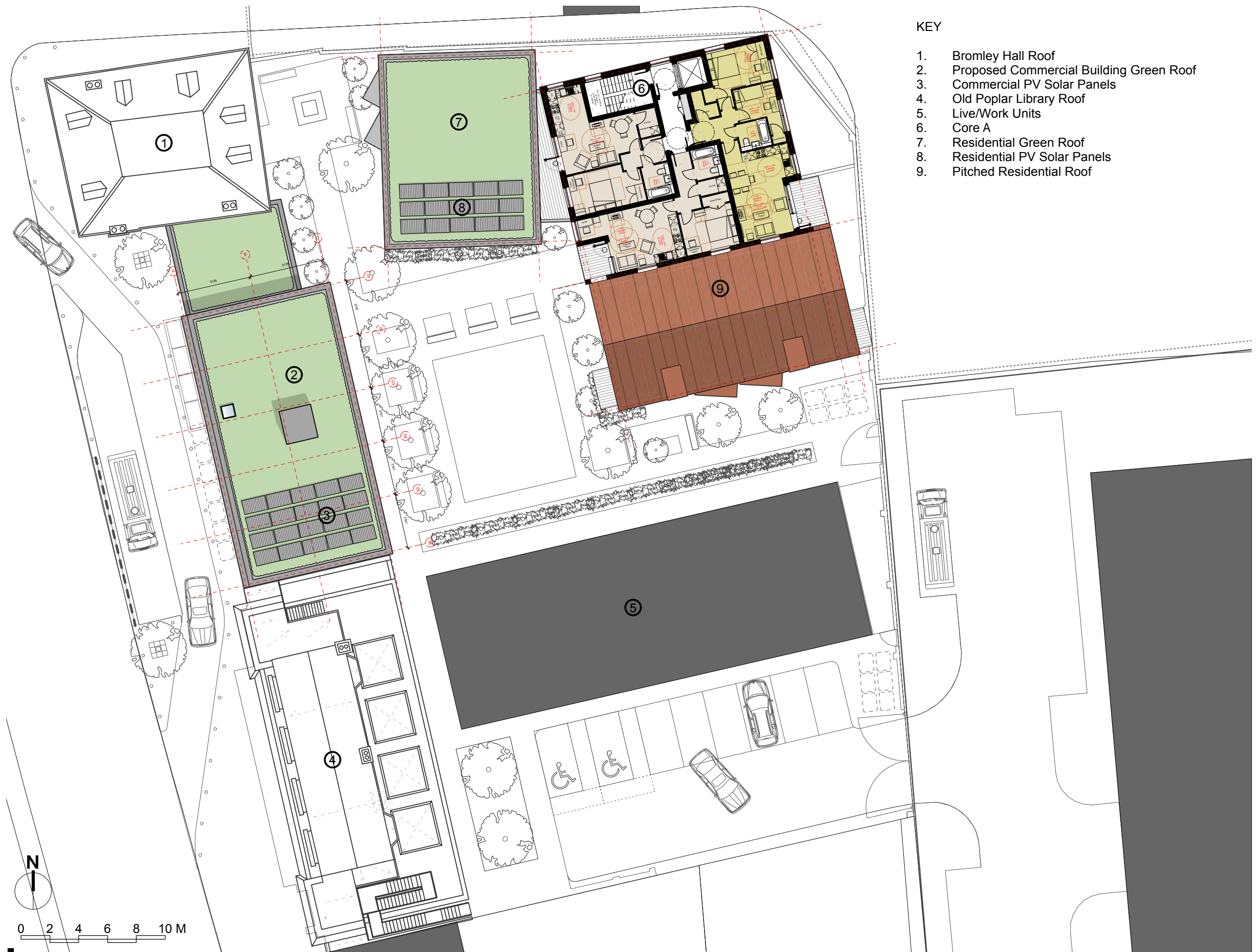


## LEASIDE BUSINESS CENTRE FEASIBILITY

FLOOR 02

# KEY

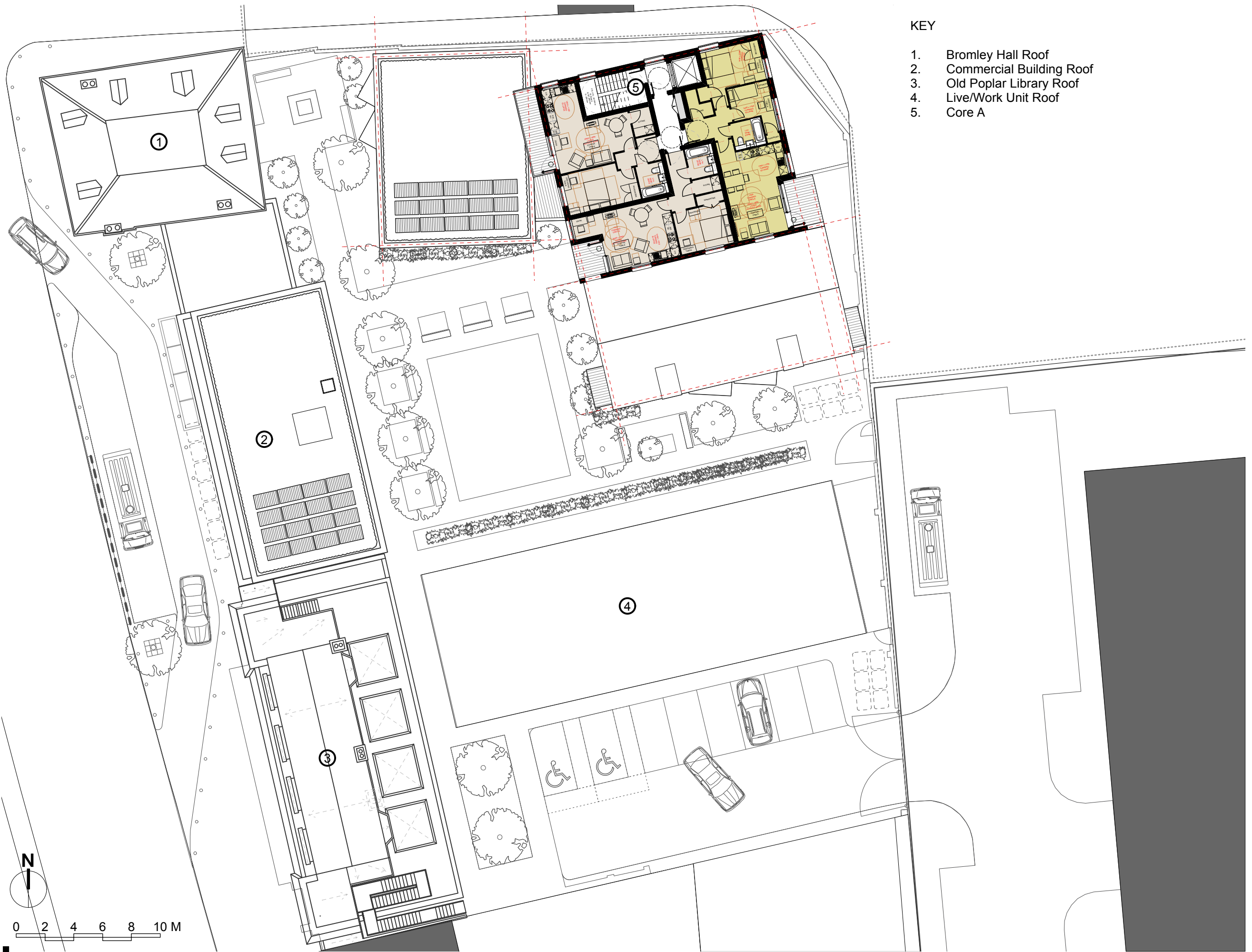
1. Bromley Hall Roof
2. Proposed Commercial Building Green Roof
3. Commercial PV Solar Panels
4. Old Poplar Library Roof
5. Live/Work Units
6. Core A
7. Residential Green Roof
8. Residential PV Solar Panels
9. Pitched Residential Roof



## LEASIDE BUSINESS CENTRE FEASIBILITY

FLOOR 03

SK104 | 1:250 @ A3 | 17.05.19



KEY

- 1. Bromley Hall Roof
- 2. Commercial Building Roof
- 3. Old Poplar Library Roof
- 4. Live/Work Unit Roof
- 5. Core A



KEY

1. Bromley Hall Roof
2. Proposed Commercial Building Roof
3. Old Poplar Library Roof
4. Live/Work Units
5. Proposed Residential Roof